

Three-Phase Switches

Electrical Apparatus

K-SEC 926

Sidebuster® Type M-Force™ Switch

DESCRIPTION

The Kearney™ Sidebuster® Type M-Force™ Switch is a distribution class, gang operated, factory unitized three-phase overhead loadbreak switch. The Type M-Force Switch is offered in distribution voltage classifications of 15 kV, 25 kV, and 35 kV. The Type M-Force Switch may be used for line sectionalizing, paralleling, by-passing, isolating or as a remote system when used in conjunction with a motor operator.

M-Force stands for “Magnetic Force”. Cooper Power Systems has the only reverse loop contacts found on distribution class sidebreak switches; a contact usually reserved for higher priced transmission switches. The reverse loop contacts utilize high current magnetic forces for added reliability. The reverse loop design allows for high contact pressure to be maintained during fault conditions. This feature prevents pitting and distorting of the switch blade and contacts even under severe momentary overload.

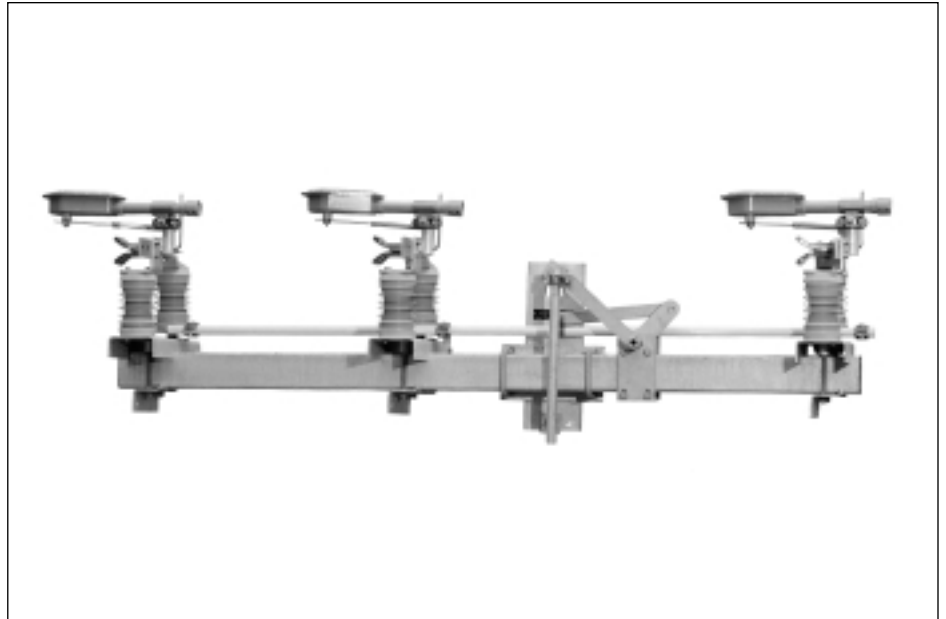


Figure 1.
Sidebuster Type M-Force Switch.

BASIC CONCEPT

Current-carrying conductors that are parallel to each other and have current flowing in the same direction, attract each other due to the magnetic forces acting on them (See Figure 2A).

Current-carrying conductors that are parallel to each other and have current flowing in the opposite direction, repel due to the magnetic forces acting on them (See Figure 2B).

Current flows through the two parallel inner segments of the reverse loop contacts in the same direction, thus these two segments attract each other, initiating contact pressure. Current flow through the inner segment and the outer segment is in opposite directions, which causes a repelling force that amplifies the contact pressure.

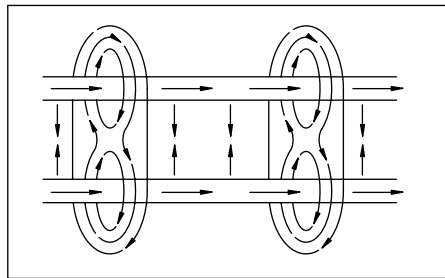


Figure 2A.
Current flowing in same direction.

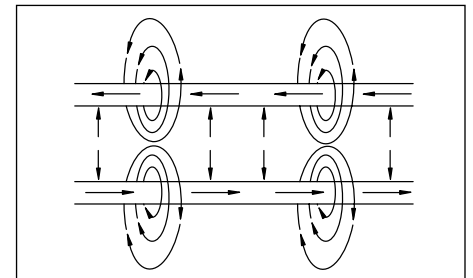


Figure 2B.
Current flowing in opposite direction.

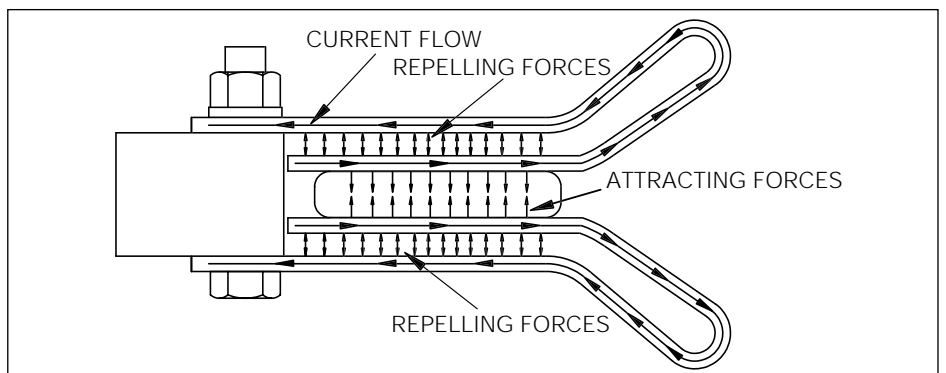


Figure 3.
Magnetic forces acting on contacts.

DESIGN FEATURES

Reverse Loop Contacts

The reverse loop contacts utilize high current magnetic forces for added reliability. The reverse loop contacts were adapted from the KPF Line Tension Switch and have been field-proven for over 80 years. The reverse loop design allows for high contact pressure to be maintained during fault conditions. This feature prevents pitting and distorting of the switch blade and contacts even under severe momentary overload. These contacts originally designed for high voltage transmission switches also maintain extremely cool temperatures even under the rated full load. The max temperature rise allowed per ANSI C37.30 for the blade and contact area is 53° C. The max temperature rise observed on the reverse loop contact area was 26° C, less than half of the allowed temperature. These types of test results, along with the proven field performance, undoubtedly make the M-Force's Reverse Loop Contacts the premiere choice in the industry.

Cycloaliphatic Insulators

The Type M-Force Switch comes standard with 2.25" bolt circle cycloaliphatic insulators. These non-porcelain insulators offer exceptional dielectric and mechanical characteristics adding to the reliability of the M-Force Switch, while lowering the weight. The M-Force can be provided in 2.25" porcelain at 15 kV and 25 kV and 3.00" porcelain at 15 kV, 25 kV, and 35 kV. When high corrosion resistance is required, 3.00" silicone rubber can be provided in all three voltage classes.

Extended Bearing Assembly

The stainless steel shaft on the rotating insulator bearing assembly has been extended to four inches. This extra length will prevent horizontal movement of the rotating insulator during operation which ensures proper blade/contact alignment which is essential for smooth operation. Another feature of the bearing assembly is the oil-impregnated bushings that provide maintenance-free operation for the life of the switch.

Insulated Reliabreak Arm

The Reliabreak Pick-up Arm on the Type M-Force Switch is insulated on one side, which isolates the interrupter from the current path during a close operation. This feature allows for a wide range of adjustments between the Reliabreak Arm and the blade catch finger. This increased tolerance removes the possibility of misalignment during operation which ensures proper load interruption.

Positive Locking Dead-End Brackets

The dead-end brackets on the Type M-Force Switch are of a positive locking design. This design allows for dead-ending at an angle without any distortion of the brackets. This allows for a more flexible switch that can be used in a wider variety of installation requirements.

New Inter-Phase Clamps

The inter-phase control rod clamps on the Type M-Force Switch are designed with a jam nut through the side of the casting which locks the clamps after factory alignment. This feature eliminates any possibility of accidental slippage of the control mechanism which ensures proper operation even under icy conditions.

Optional Ice Shields

The standard M-Force Switch is capable of operating under a 3/8" ice build up. With the optional ice shields the M-Force is capable of opening and closing with a 3/4" ice build up.

The unique shields are designed to prevent ice from building up between the contact clips as well as removing the ice from the blade during the closing operation. Per ANSI C37.34, a chopping action is allowed during the close operation to break the ice. Due to the shearing action of the M-Force Ice Shields, the closing operation can be accomplished with one motion. No chopping is needed.

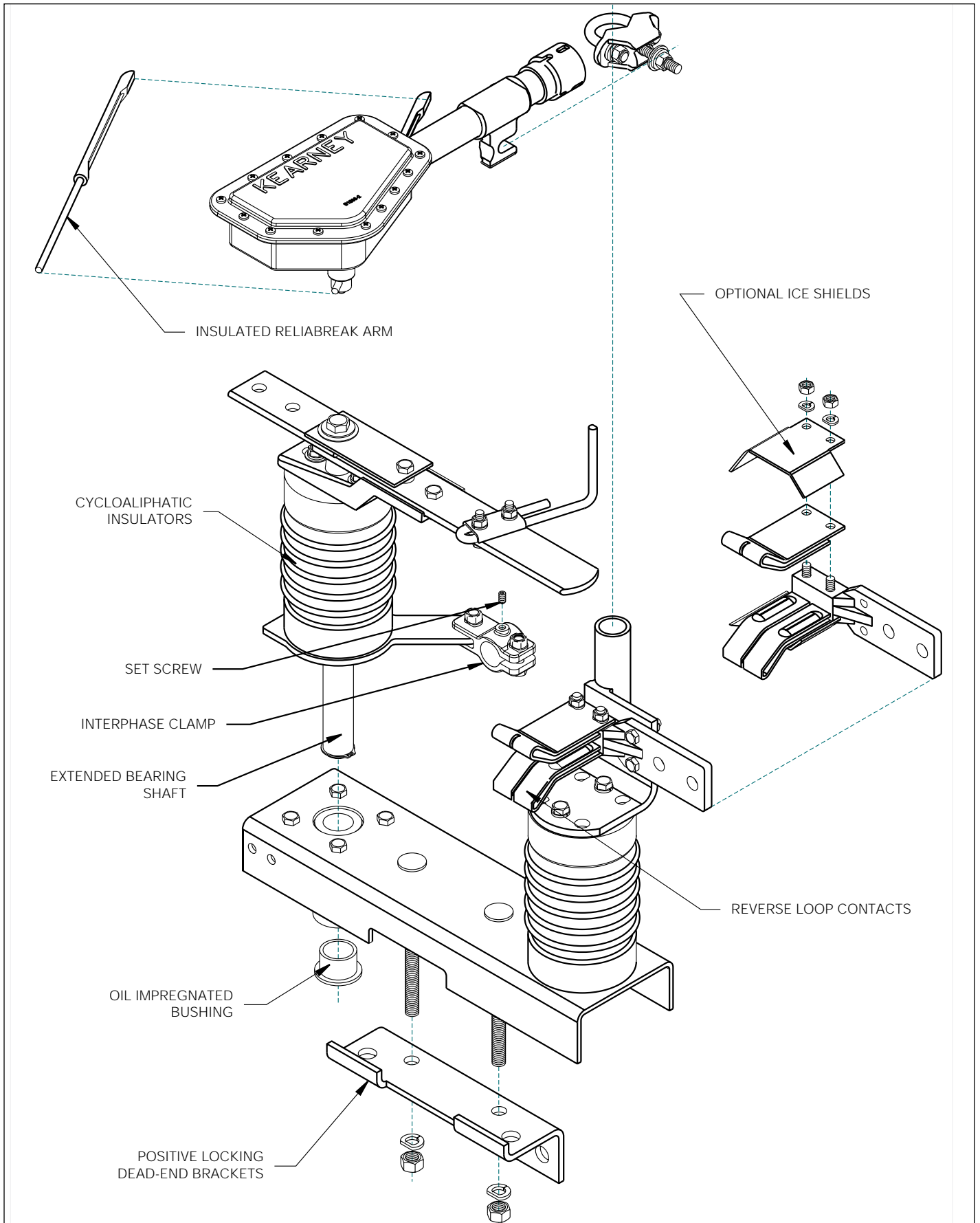


Figure 4.
Illustration of Sidebuster Type M-Force Switch.

TYPE M-FORCE SWITCH DIMENSIONAL DATA

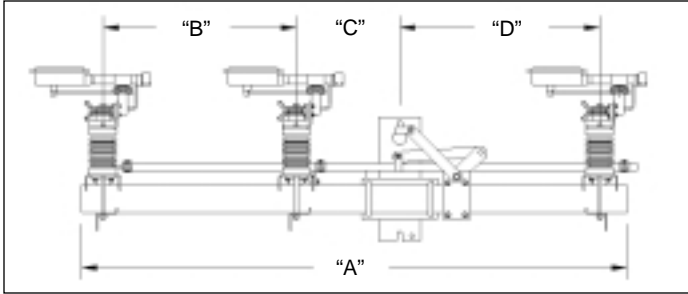


Figure 5. Horizontal switch configuration.

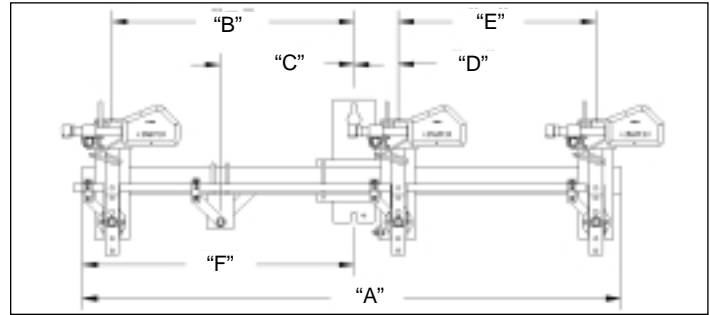


Figure 7. Vertical switch configuration.

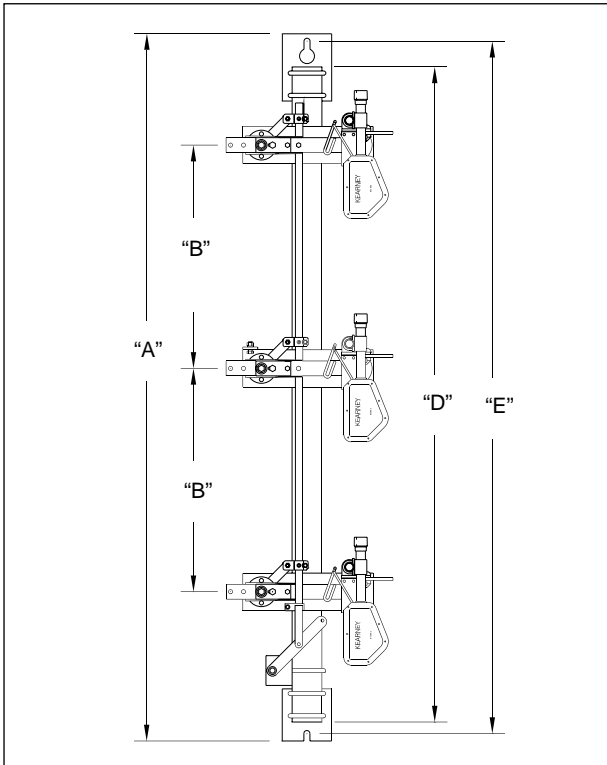


Figure 6. Phase-over-phase switch configuration.

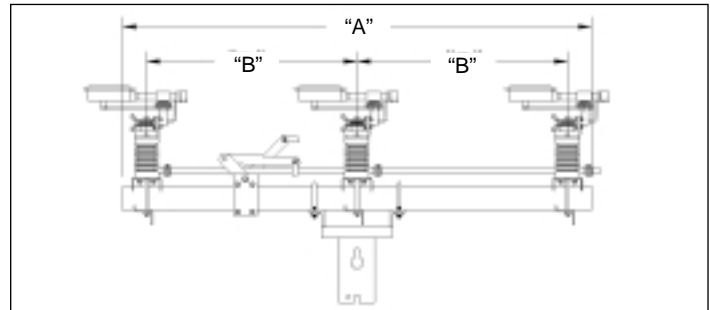


Figure 8. Horizontal Pole top switch configuration.

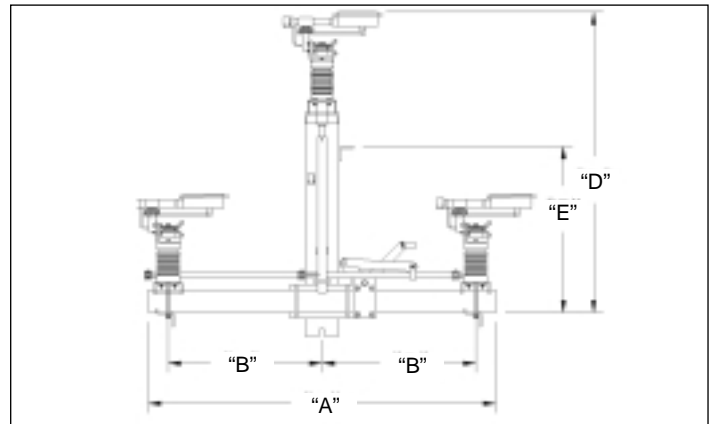


Figure 9. Triangular switch configuration.

TABLE 1 Dimensional Information

Dim.	Horizontal						Vertical (Riser)						Phase-over-Phase			Triangular		
	Standard			G095			Standard			G095			15 kV	25 kV	35kV	15 kV	25 kV	35 kV
A	79"	88"	119"	97"	108"	126"	79"	88"	97"	108"	119"	126"	95"	104"	126"	61"	73"	79"
B	28"	33"	42"	28"	33"	42"	35.5"	40"	45"	49.5"	56"	54.5"	30"	34.5"	45.5"	27"	33"	36"
C	15"	15"	18"	24"	24"	24"	19.5"	19.5"	19.5"	19.5"	19.5"	19.5"	N/A	N/A	N/A	N/A	N/A	N/A
D	29"	33"	52"	38"	43.5"	52.5"	6.5"	6.5"	6.5"	22"	22.5"	22.5"	88"	97"	119"	58"	61"	73"
E	N/A	N/A	N/A	N/A	N/A	N/A	29"	33.5"	45"	29"	33.5"	42"	93"	102"	124"	34"	34"	42"
F	N/A	N/A	N/A	N/A	N/A	N/A	39.5"	45"	48.5"	53.5"	59.5"	58"	N/A	N/A	N/A	N/A	N/A	N/A
Horizontal Pole Top																		
Standard																		
Dim.	15 kV	25 kV	35 kV															
A	79"	79"	97"															
B	28"	36"	45"															

PHASE UNIT DIMENSIONS

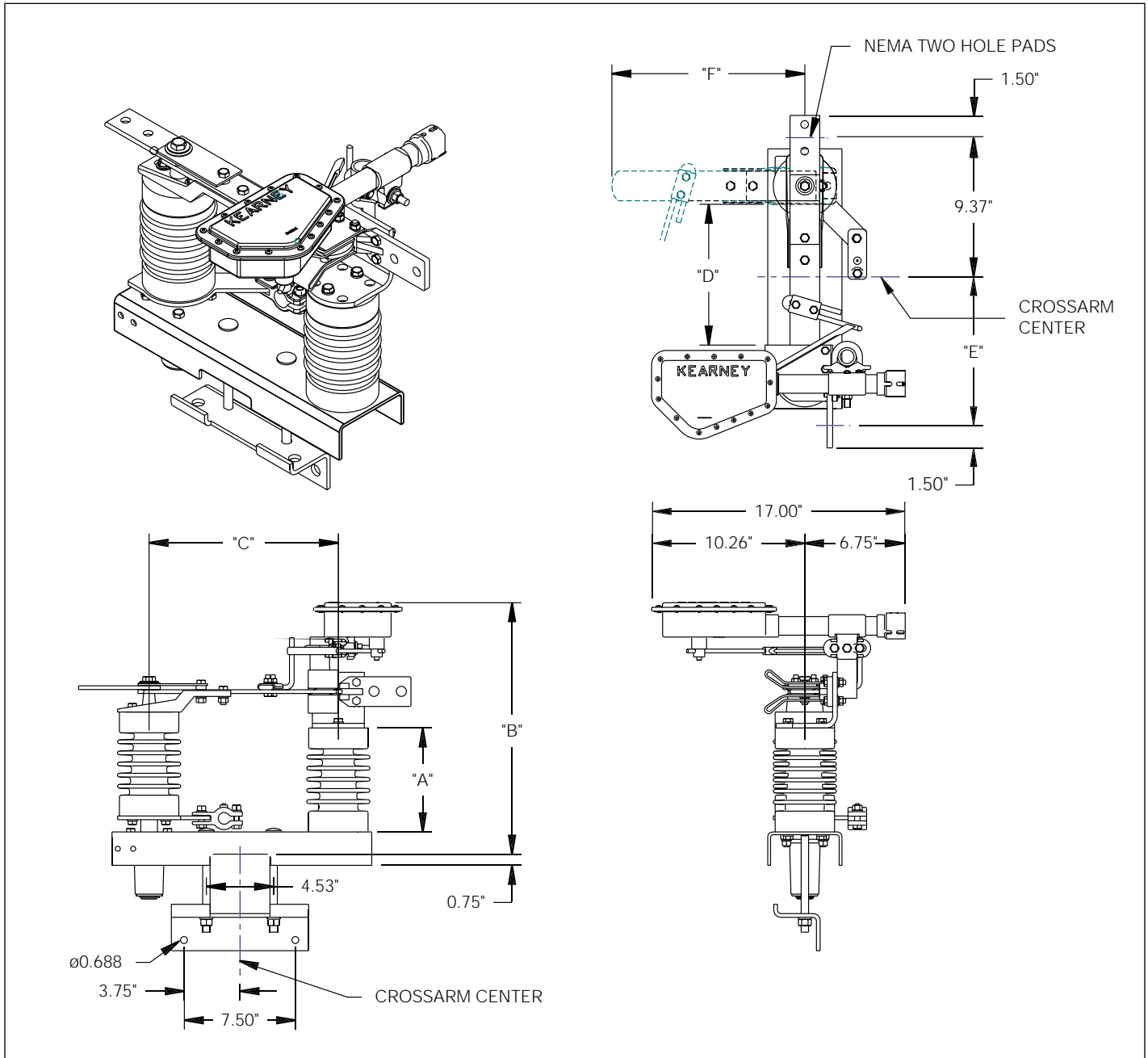


Figure 10. Phase unit breakdown.

TABLE 2 Phase Unit Dimensions

Dim.	Voltage Class	15 kV		25 kV		35 kV
	Insulator Material	2.25" B.C.	3.00" B.C.	2.25" B.C.	3.00" B.C.	3.00" B.C.
A	Cycloaliphatic	7.00"	8.50"	10.00"	10.00"	14.00"
	Porcelain	8.00"	10.00"	10.00"	14.00"	18.00"
	Silicone Rubber	N/A	10.00"	N/A	14.00"	18.00"
B	B = A + 10.00"					
C		12.75"		15.37"		20.00"
D		9.48"		12.10"		16.73"
E		10.01"		12.63"		17.26"
F		13.00"		15.62"		20.25"

TECHNICAL SPECIFICATIONS

TABLE 3
Insulator Creep Distances

	2.25" Bolt Circle Insulators			3.00" Bolt Circle Insulators		
	15 kV	25 kV	35 kV	15 kV	25 kV	35 kV
Porcelain Insulators	14.0"	17.38"	N/A	15.50"	24"	37.00"
Epoxy Insulators	18.3"	22.70"	N/A	20.82"	32"	37.69"
Silicone Rubber Insulators	N/A	N/A	N/A	15.50"	24"	37.00"

TABLE 4
Electrical Characteristics

	Max	BIL	Cont. Current	Loadbreak	Momentary**	3 Second	Fault Close (ASM)
15 kV	17 kV	110 kV	600 A*	50 @ 600 A, 10 @ 900 A	40 kA Asy. rms	25 kA Sym. rms	1 @ 20 kA, 3 @ 15 kA
25 kV	29 kV	150 kV	600 A*	50 @ 600 A, 10 @ 900 A	40 kA Asy. rms	25 kA Sym. rms	1 @ 20 kA, 3 @ 15 kA
35 kV	38 kV	200 kV	900 A	10 @ 900 A	40 kA Asy. rms	25 kA Sym. rms	1 @ 20 kA, 3 @ 15 kA

* 900 A optional.

** Momentary peak current is 65 kA.

Contacts

- The stationary contact shall be silver-plated hard drawn copper in a reverse loop configuration.
- The reverse loop design shall ensure that pressure is applied to the blade when subjected to high fault currents.
- The stationary contact shall not incorporate unreliable backup springs to apply necessary contact pressure.
- The interrupter mechanism shall be capable of 2500 successful mechanical operations.
- The interrupter shall be capable of 10 successful 900 A interruptions at 38 kV and 50 successful 600 A interruptions at a rated 27 kV.
- The body of the interrupter shall be manufactured from UV stabilized Lexan 103 material and shall be easily replaced with a hotstick.
- Each phase unit shall be secured to the crossarm with locking spacers to eliminate distortion of the phase unit base.
- Dead-end brackets shall incorporate locking tabs that will eliminate movement under side forces present when conductor is dead-ended at an angle.

Blade

- The blade shall be a silver-plated hard drawn copper of solid blade buss design.
- The blade shall not be a truss type design that requires backup springs to insure contact pressure.
- The blade and contact design shall be self-wiping and capable of 20,000 mechanical operations without detrimental wear.

Interrupter

- The load interrupter shall be of type "Reliabreak".
- The internal mechanism of the interrupter shall be manufactured from non-ferrous components ensuring long term resistance to corrosion in all environments.
- The interrupter operating arm shall be stainless steel (304) with UV stabilized Lexan 103 insulation molded permanently onto the arm.

Phase Units

- All current-carrying parts shall be manufactured from copper.
- Terminal pads shall be NEMA two hole, silver or tin-plated.
- The rotating insulator stack shall incorporate oil-impregnated bronze bearings to ensure maintenance free operation for life of the switch.
- The spindle shall be manufactured from stainless steel and shall be supported by bushings spaced at four inches to eliminate rocking of the insulator and to ensure proper blade and contact alignment.

TABLE 5
Type M-Force Three-Phase Switch Catalog Number Configuration

	M	X	X	X	X	X	X	X	X
<p>VOLTAGE CLASS</p> <ul style="list-style-type: none"> 1 - 15 kV/110 KV BIL (600 A STANDARD) 2 - 25 kV/150 KV BIL (600 A STANDARD) 3 - 35 kV/200 KV BIL (900 A STANDARD) <p>MOUNTING CONFIGURATION</p> <ul style="list-style-type: none"> A - HORIZONTAL POLE TOP H - HORIZONTAL UPRIGHT P - PHASE OVER PHASE R - VERTICAL RISER G - HORIZONTAL UPRIGHT (GO95 SPACING) S - VERTICAL RISER (GO95 SPACING) T - TRIANGULAR U - UNDERHUNG (GO95 SPACING) <p>CONTROL ROD</p> <p>RECIPROCATING</p> <ul style="list-style-type: none"> 0 - NONE (ON HOOKSTICK OPTION) 1 - 28' OF ROUND PIPE 1.0" O.D. 2 - 28' OF ROUND FIBERGLASS 3 - 28' OF 1.75" SQUARE FIBERGLASS 4 - 28' OF 1" PIPE W/ FIBERGLASS TOP SECTION 5 - 28' OF PIPE W/ CYCLOALIPHATIC INSULATOR 6 - 28' OF PIPE W/ PORCELAIN INSULATOR 7 - 28' OF PIPE WITH SILICONE RUBBER INSULATOR <p>TORSIONAL</p> <ul style="list-style-type: none"> A - 28' OF 1.5" PIPE (STEEL UNIVERSAL SECTION) B - 28' OF 1.5" PIPE (FIBERGLASS UNIVERSAL SECTION) C - 28' OF 1.5" PIPE (CYCLOALIPHATIC INSULATOR) D - 28' OF 1.5" PIPE (PORCELAIN INSULATOR) E - 28' OF 1.5" PIPE (SILICONE RUBBER INSULATOR) <p>CONTROL MECHANISM</p> <ul style="list-style-type: none"> 0 - NONE 1 - RECIPROCATING HANDLE 2 - TORSIONAL HANDLE 3 - HOOKSTICK BELLCRANK (NO CONTROL ROD) <p>CROSSARM OPTIONS</p> <ul style="list-style-type: none"> F - FIBERGLASS WITH TWO POINT LIFT G - FIBERGLASS WITH SINGLE POINT LIFT S - STEEL WITH TWO POINT LIFT T - STEEL WITH SINGLE POINT LIFT 									<p>OPTIONS (See Pages 8-9 for details) NOTE: MORE THAN ONE MAY BE CHOSEN</p> <ul style="list-style-type: none"> A - 900 A CONTINUOUS CURRENT (STANDARD ON 35 kV) B - PROVISIONS FOR CROSSARM SUPPORT BRACKET C - CAPTIVE HARDWARE ON TERMINAL PADS D - 90 DEGREE BELLCRANK, FOR HORIZONTAL CONFIGURATION WITH RECIPROCATING CONTROLS E - EXTENSION LINKS (14") F - BONDED RECIPROCATING CONTROL HANDLE (STANDARD ON TORSIONAL CONTROLS) G - RECIPROCATING HANDLE WITH INTERLOCKS H - LIGHTNING ARRESTER BRACKETS I - STEEL INTERPHASE ROD J - PROVISIONS FOR NEUTRAL WIRE K - PROVISIONS FOR SENSORS L - CURRENT SENSORS (LINDSEY) M - VOLTAGE SENSORS (LINDSEY) N - CURRENT/VOLTAGE SENSORS(LINDSEY) O - TERMINAL, GIBBONS, 1/0-336 MCM P - TERMINAL, AMP® # 5693981 Q - AIR BREAK ONLY (NO INTERRUPTER) R - ADDITIONAL NAME PLATE ON HANDLE S - ICE SHIELDS (3/4" ICE BREAK ON OPEN OR CLOSE OPERATION) T - GROUNDING CONNECTOR ON CROSSARM MOUNTING BRACKET U - TERMINALS, COPPER, #2 - 500 MCM V - POLE MOUNTING BAND 1 - EXTRA 7' OF CONTROL ROD 2 - EXTRA 14' OF CONTROL ROD 3 - EXTRA 21' OF CONTROL ROD <p>INSULATOR BOLT PATTERN</p> <ul style="list-style-type: none"> 2 - 2.25" BOLT CIRCLE (NOT AVAILABLE IN SILICONE RUBBER OR 35 kV VOLTAGE CLASS) 3 - 3.0" BOLT CIRCLE (ANSI) (PORCELAIN, CYCLOALIPHATIC OR SILICONE RUBBER) <p>INSULATOR MATERIAL</p> <ul style="list-style-type: none"> P - PORCELAIN C - CYCLOALIPHATIC (STANDARD, 2.25" B.C. PROVIDED IF NO INSULATORS ARE SPECIFIED) R - SILICONE RUBBER

CONTROL ROD OPTIONS

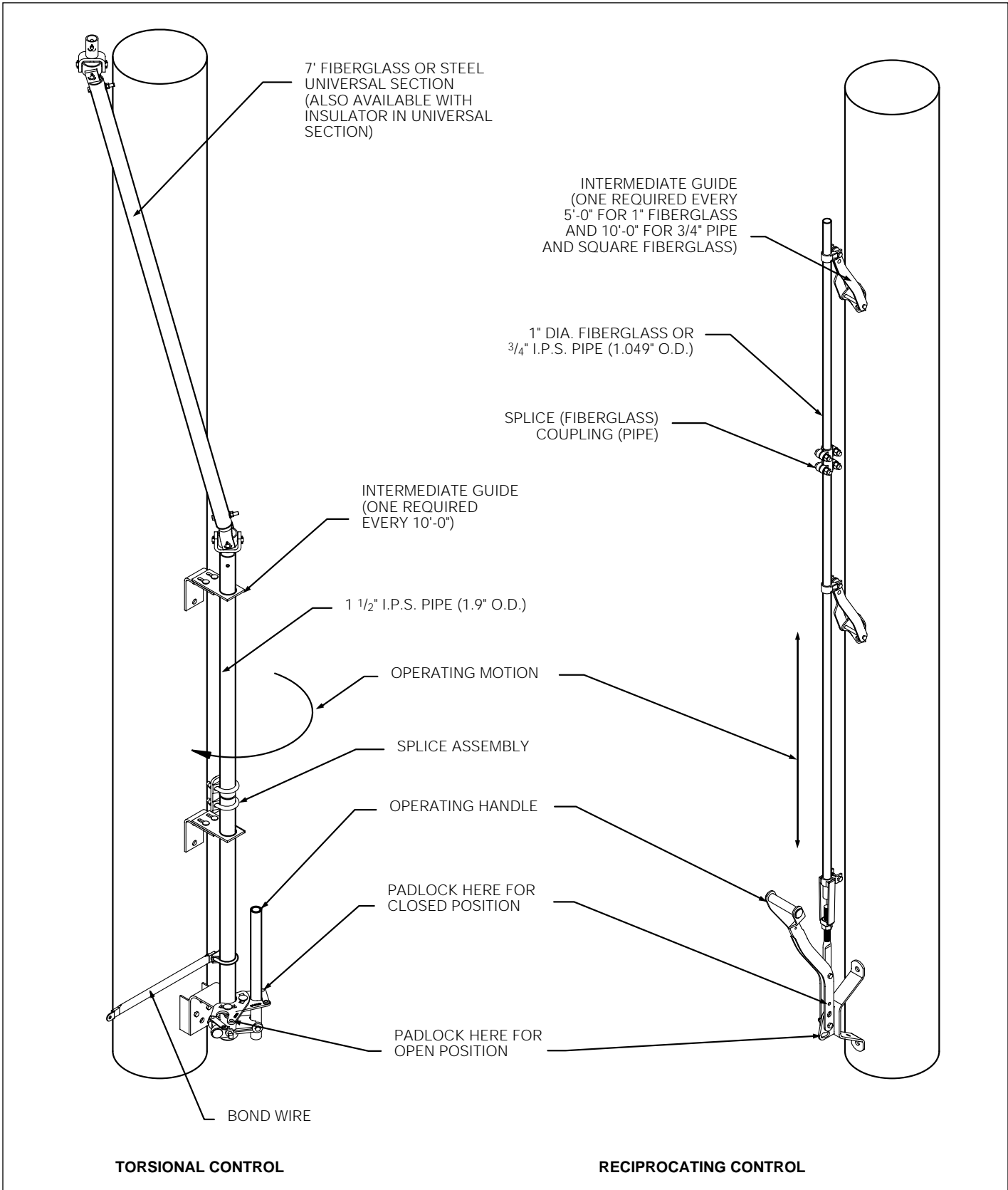


Figure 11.
Torsional and Reciprocating control rod options.

Note: The standard length of control rod is 28'. Extra 7' lengths are available (see page 7 for options).
When one section of fiberglass is ordered for reciprocating control, the top section will be designated as that segment.

DEFINITION OF OPTIONS

A – 900 A Continuous Current Rating

The "A" option is available on 15 kV and 25 kV switches to designate a continuous rating of 900 A. This is achieved by increasing the thickness of the silver-plated copper buss blade. All 35 kV class switches are rated 900 A continuous.

B – Provisions for Crossarm Support Brackets

The "B" option supplies two adjustment mounting brackets on crossarm. This allows the customer to install support brackets/alley arms to the crossarm. The support brackets are not included.

C – Captive Hardware on Terminal Pads

This option provides two 1 3/4" captive stainless steel studs on each NEMA two-hole pad. These are usually used in conjunction with compression terminals.

D – 90° Bellcrank

The 90° bell crank allows for a reciprocating control rod to be positioned 90° around the pole from the front of the switch.

E – Extension Links

This option provides two 14" extension links on each conductor dead-end bracket, six per switch.

F – Bonded Control Handle

This option provides a grounding strap and connector that is attached to the manual operating handle. This is a standard feature on torsional control designs.

G – Reciprocating Handles with Interlocks

This option provides manual interlocks on switches and is available on switches sold in pairs only. When ordered with this option, end user information such as; utility name, contact person, address, and phone number will have to be provided prior to order input as required by the manufacturer of the interlocks.

H – Lightning Arrester Brackets

This option provides provisions for the mounting of six lightning arresters per switch.

I – Steel Interphase Rod

This provides a 1" O.D. steel interphase rod. The standard rod is UV inhibited fiberglass.

J – Provisions for Neutral Wire

This option provides a hole and spacing for a pin type insulator to be located on the crossarm to accommodate the neutral wire.

K – Provisions for Sensors

This option provides longer phase unit bases that will accept sensors to be easily mounted if the manual switches are to be retrofitted for SCADA with a motor operator at a later date.

L – Current Line Post Sensors (3 Each)

This option is commonly used in conjunction with a motor operator. Additional technical information will be required when ordering sensors. Some information may include length of cable, connection requirements, current input/output ratios, etc.

M – Voltage Line Post Sensors (3 Each)

This option will be used in conjunction with a motor operator. Information similar to option L may be required.

N – Current/Voltage Line Post Sensors (3 Each)

This option provides both current and voltage sensors in one line post sensor per phase. The information requirements mentioned in option L will also apply.

O – Terminals

This option provides four bolt connectors on each two-hole NEMA pad with a conductor range of 1/0 - 336 MCM.

P – Terminal, AMP®

This option provides an AMP® connector stud on each two-hole NEMA pad. These are used in conjunction with wedge type connectors.

Q – Air Break Only

This option provides the M-Force Switch without Reliabreak Interrupters. This option is used when no loadbreak capability is not required.

R – Additional Nameplate on Handle

This option provides a nameplate fixed to the manual control handle in addition to the nameplate mounted on the switch crossarm.

S – Ice Shields

This option provides ice shields on each switch clip contact. This allows the switch to be opened or closed under a 3/4" ice build up.

T – Grounding Connector

This option provides a grounding lug on the crossarm mounting bracket. This allows for the utility to ground the switch base to the pole ground.

U – Terminals

This option provides connectors on each two-hole NEMA pad with a conductor range of #2 - 500 MCM.

V – Pole Mounting Band

This option provides the additional support of adjusting pole bands that are attached to the pole mounting bracket.

TABLE 6
Shipping Weights and Dimensions (2.25" Bolt Circle Cycloaliphatic Insulators Standard, 3.00" on 35 kV)

	Voltage Class	15 kV		25 kV		35 kV	
	Crossarm	Steel	Fiberglass	Steel	Fiberglass	Steel	Fiberglass
Horizontal Upright	Crate L" x W" x H"	94" x 27" x 34"	94" x 27" x 34"	104" x 30" x 38"	104" x 30" x 38"	134" x 37" x 41"	134" x 37" x 41"
	Weight	390 lbs.	356 lbs.	428 lbs.	394 lbs.	535 lbs.	501 lbs.
Horizontal Pole Top	Crate L" x W" x H"	94" x 27" x 34"	94" x 27" x 34"	94" x 27" x 34"	94" x 27" x 34"	134" x 37" x 41"	134" x 37" x 41"
	Weight	386 lbs.	352 lbs.	424 lbs.	390 lbs.	531 lbs.	497 lbs.
Phase over Phase	Crate L" x W" x H"	100" x 27" x 34"	100" x 27" x 34"	110" x 30" x 38"	110" x 30" x 38"	140" x 37" x 41"	140" x 37" x 41"
	Weight	471 lbs.	437 lbs.	509 lbs.	475 lbs.	616 lbs.	582 lbs.
Vertical Riser	Crate L" x W" x H"	94" x 27" x 34"	94" x 27" x 34"	104" x 30" x 38"	104" x 30" x 38"	134" x 37" x 41"	134" x 37" x 41"
	Weight	411 lbs.	377 lbs.	449 lbs.	415 lbs.	556 lbs.	522 lbs.
Triangular	Crate L" x W" x H"	93" x 27" x 73"	94" x 27" x 73"	93" x 30" x 73"	93" x 30" x 73"	199" x 37" x 85"	99" x 37" x 85"
	Weight	480 lbs.	446 lbs.	518 lbs.	484 lbs.	625 lbs.	591 lbs.

Note: G095 spacing and special switch options will cause slight variations.

TABLE 7
Weight Adders

	15 kV		25 kV		35 kV
	2.25" B.C.	3.00" B.C.	2.25" B.C.	3.00" B.C.	3.00" B.C.
Epoxy Insulators	Standard	32 lbs.	Standard	40 lbs.	Standard
Silicone Insulators	N/A	5 lbs.	N/A	(11 lbs.)*	(74 lbs.)*
Porcelain Insulators	45 lbs.	105 lbs.	43 lbs.	150 lbs.	142 lbs.

* () Brackets denote reduction in weight from standard.



© 2000 Cooper Industries, Inc.
Sidebuster® is a registered trademark of Cooper Industries, Inc.
Kearney™, M-Force™ and Reliabreak™ are trademarks of Cooper Industries, Inc.
AMP® is a registered trademark of Tyco Industries.

P.O. Box 1640
Waukesha, WI 53187
www.cooperpower.com