

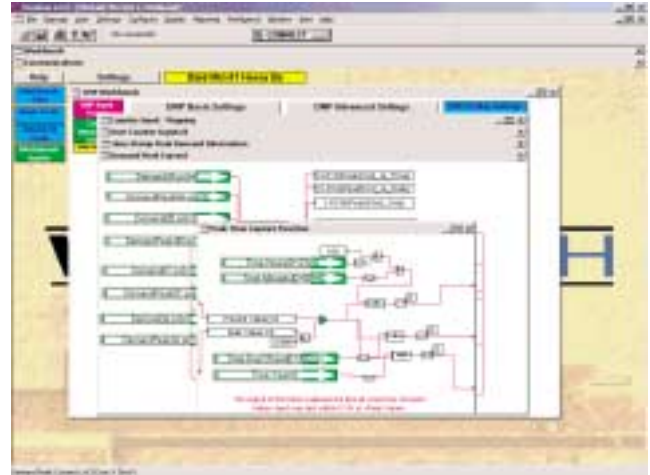
Utility Enhances System Communication with ProView™ Idea Workbench™

French Broad EMC, an electric cooperative based in Marshall, NC, is installing a system wide SCADA system to monitor power used from the transmission supplier and provide data to their System Planning and Operations department. The project focused on gathering data from substation voltage regulators and reclosers. In order to gain communication capabilities through the reclosers, French Broad upgraded all of their Cooper Power Systems Form 3A recloser controls to Form 6 controls.

The French Broad EMC engineers chose to communicate to the controls with DNP 3 communications protocol allowing them to utilize existing radio, fiber optic, and RS485 communication lines. The Form 6 control was selected in part because of the standard RS485 and RS232 communication ports and additional flexibility to add radio mounting provisions and fiber optic accessories.

The Form 6 ProView™ application software enabled French Broad to program the control for basic over-current protection and other advanced protection schemes. French Broad also used ProView™ to customize the control front panel pushbuttons making it easier for operations personnel to interrogate and control the recloser.

The ProView™ Communications Workbench™ was significant to the project for integration of the Form 6 controls to their SCADA system. French Broad easily customized the DNP 3 point database. With the ability

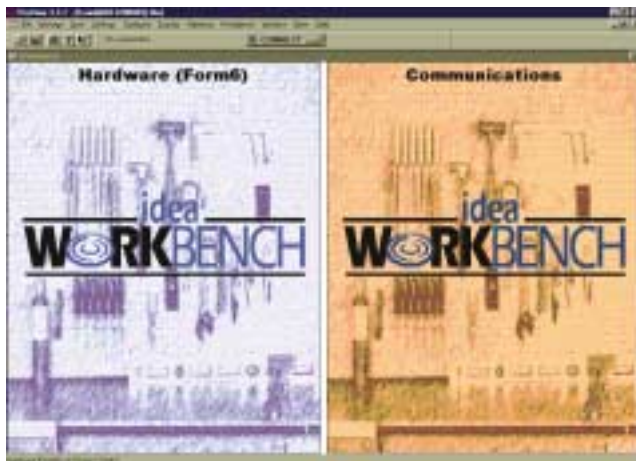


Communications Workbench™ customization.

to simply drag and drop data points and control status signals, French Broad designed their own DNP 3 point database within days. Cooper Power Systems engineers quickly produced new data point signals specifically for French Broad. After they added all of the desired data points, they removed unnecessary points, and completely rearranged the remaining points into a database that best suited their needs.

According to Jeff Loven, PE, French Broad, EMC, "We basically went through each point and decided what points we wanted to see coming back on our SCADA. We mapped those points on the Communications Workbench, and through mapping those we came up with a systematic map for the points and input those into our SCADA system. It was rather simple once we got the first one done. The biggest plus is, instead of pulling back all the data that Cooper Power Systems includes in the control, we were able to streamline the communication platform and not bog it down with unwanted data."

Considering Form 6 application software advantages, Loven observed, "It's a combination between ProView, that it is easy to use, very intuitive, and pretty simplistic and the Communications Workbench and the drag and drop features. It doesn't take hours on end to do it. The price was a nice feature. The cost vs. benefits ratio was superior to anything else out there."



Idea Workbench™ application main screen.

Kyle[®] Distribution Switchgear

- Substation Breakers
- Substation Reclosers
- Line Reclosers
- Sectionalizers
- Padmount Reclosers
- Microprocessor-Based Controls
- Capacitor Switches
- General Purpose Switches
- Distribution Automation Switches
- Transfer Packages
- Padmount Switches
- Subsurface Switches
- Padmount Fault Interrupters
- Subsurface Fault Interrupters
- Expanded Website Support at www.cooperpower.com
- Software Training
- Interface Software Downloads
- Expanded Literature Database
- E-mail Help-Site
- Cooper Power Systems Newsletter E-mail
- Specialized Hands-On Training Classes
- Factory and Regional Authorized Service Shops
- Worldwide Field Service
- Switchgear Support Group
- 1-800-497-KYLE
- 1-800-497-5953

After 60 years of continued customer service growth, Kyle[®] has an unmatched history as the leader in the distribution switchgear industry.

Even as we look to the future, we remain committed to that legacy.

*Innovative
Products*

*Exceptional
Customer Service*

Contact your Cooper Power Systems Representative for additional information.

The Quality System at Cooper Power Systems, Kyle Distribution Switchgear is ISO 9001 certified.