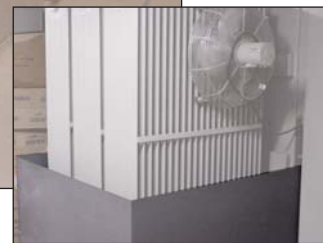


## Indoor-Powercenter™ Transformer Containment – Part of a Complete Package



Actual color of containment pans matches the transformer. Color shown is to highlight the location of the pans on the transformer.

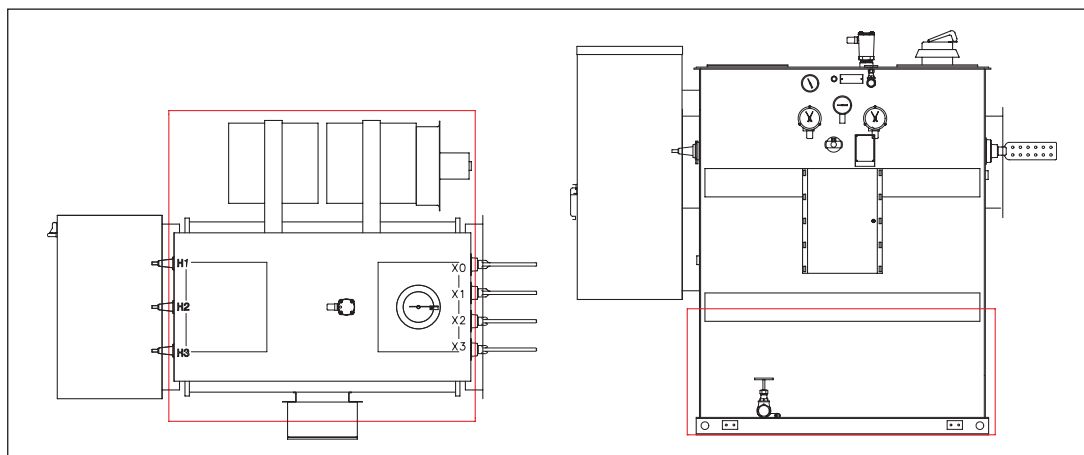


**Description:**

The NEC® requires containment for all indoor liquid-filled transformer applications. Containment may take the form of room containment (door sills), curbing, or containment pans. Cooper Power Systems offers a full range of containment pans for its complete line of substation transformers, including the Indoor-Powercenter transformer. Ideal for use inside of buildings, the Indoor-Powercenter can be used anywhere dry-type transformers have been specified.

Custom-made containment pans ship with all substation transformers. The pans are designed to form-fit the transformer and provide 100% fluid containment. The custom design ensures a tailored fit with the transformer and prevents obstruction of the work area.

The containment pans are painted and feature a drain plug. To facilitate ease of installation, all pans are provided with a removable, gasketed front panel.



## The Indoor-Powercenter™ Transformer Improved Safety, Reliability, Efficiency – at a Lower Cost

**Description:** Consultants, engineering firms, contractors, and end users are all reconsidering their previous uses of dry type transformers indoors and making the switch to the superior new fluids. New fire safety and environmental advances have made the liquid-filled transformer *the transformer of choice*.

**Recent Code Changes:**

- No Fire-Related Electrical Vaults Required
- No Sprinklers or Deluge Systems Required
- Containment Pans Available as Part of a Complete Package
- Less Clearance Distances Required
- Lower Insurance Rates



Specifically designed and approved for all indoor or roof-mounted applications. Envirotran™ Transformers are suitable in all commercial and industrial environments, placing the transformer near the load.

In nearly thirty years of use and over 100,000 units, transformers with fire-resistant fluids have never been the cause of a building or fluid-pool fire. VPI dry-type and cast-resin transformers cannot claim this same perfect fire safety record.

### Envirotran Indoor-Powercenter Compared to Dry-Type Transformers

- Lower Initial Cost
- Lower Installed Cost
- Higher Energy Efficiency
- Lower Sound Level
- Longer Insulation Life
- Better Contamination Resistance
- Higher Short-and Long-Term Overloadability
- Routine Maintenance Does Not Require Downtime
- Integrated Overcurrent and Overvoltage Options May Eliminate Traditional Switchgear

**Applications:**

■ Schools and Universities	■ Steel Producers
■ Hospitals	■ Insurance Companies
■ Religious Institutions	■ Automotive Industry
■ Theme Parks	■ Commercial/Institutional
■ Industrial Manufacturing	■ Petro/Chemical Industry
■ Power Generation	■ Pulp & Paper Industry
■ Office Buildings	■ Food & Drug Industry